

OFFICE LIGHT,
NEXT LEVEL

YARA



ENGINEERS OF LIGHT

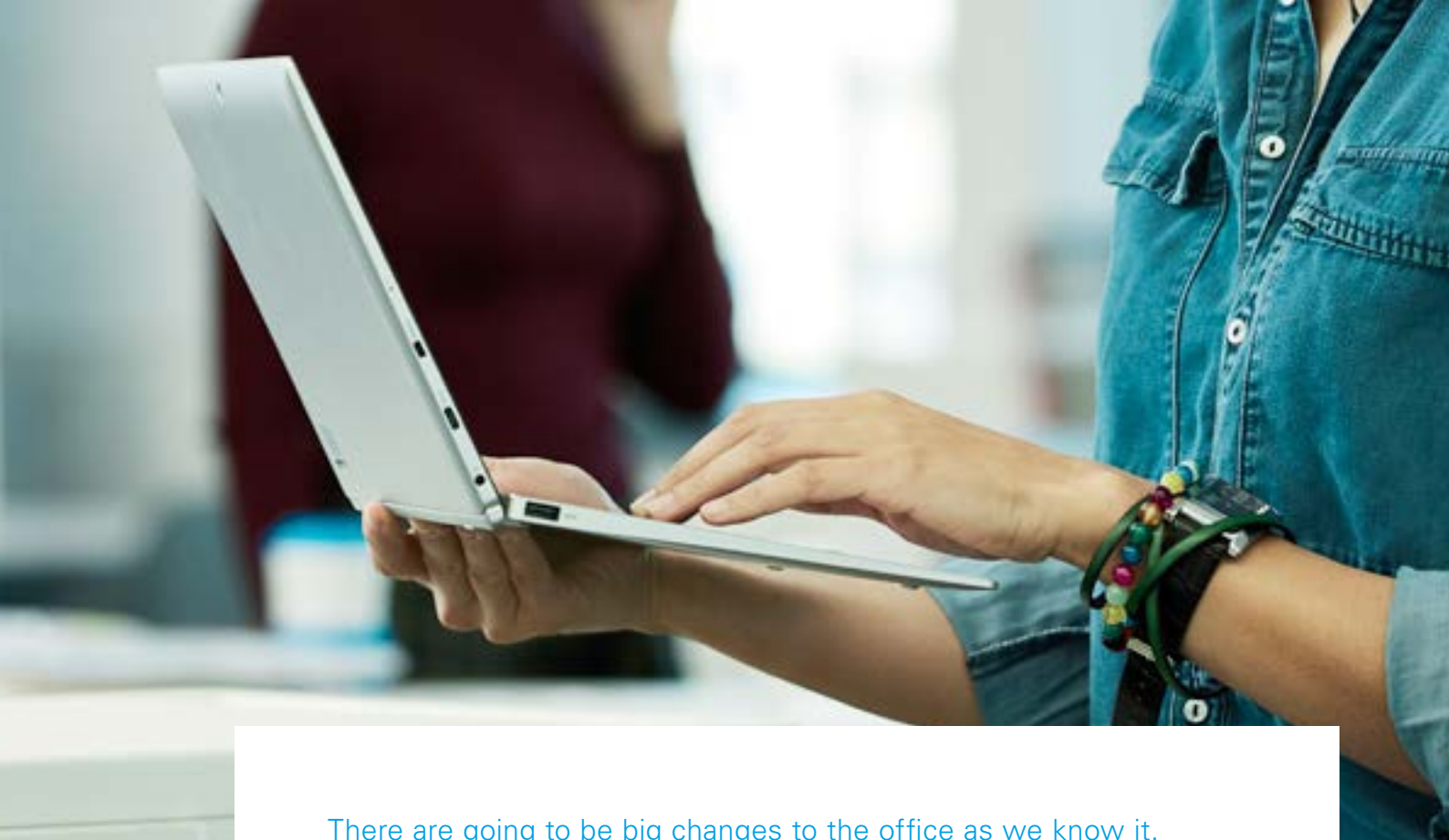
WORK LIGHTING FOR THE DIGITAL OFFICE



ENG

Waldmann



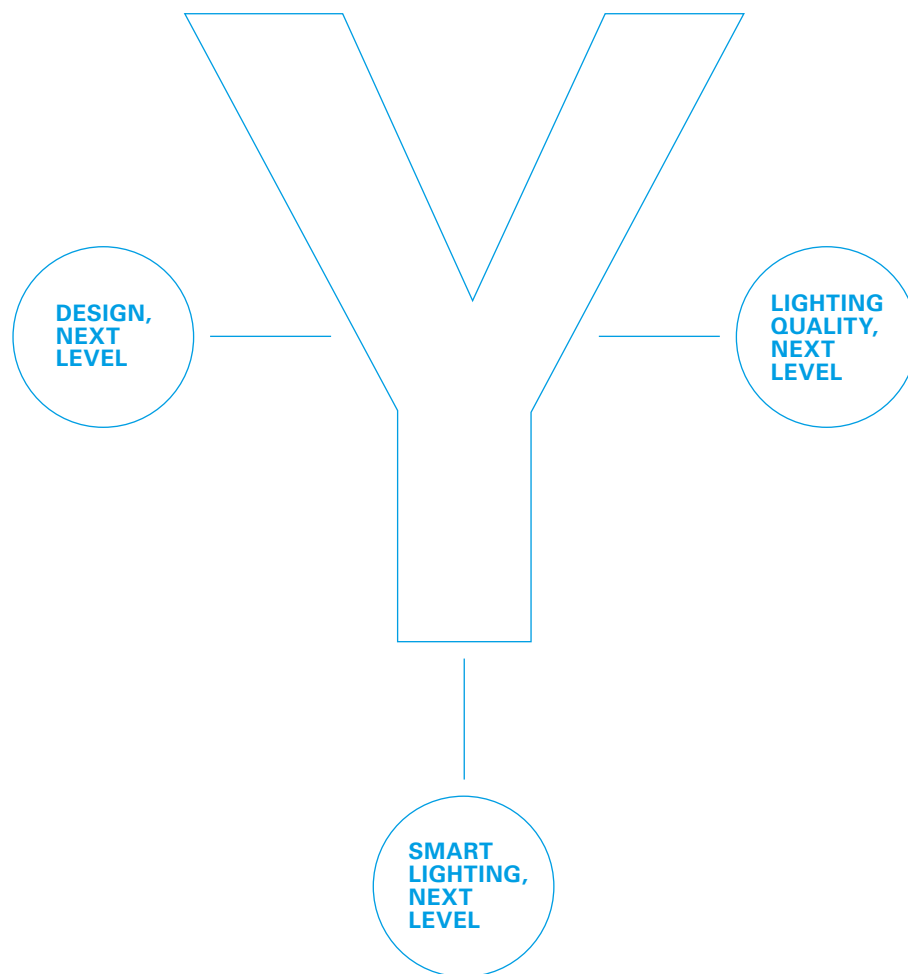


There are going to be big changes to the office as we know it. Digitalisation doesn't just influence the way we live; it affects how we work as well. Because everyone will be connected to everyone else, we won't need a fixed workplace any more. The result will be office space that can be used flexibly – and thus economically. It makes sense to be prepared for these developments, with lighting that not only adapts to any room and working situation, but at best even uses floorspace management to optimise the room climate and noise level. Thus boosting staff motivation, creativity and performance. This light is made by Waldmann, and it's called YARA.





OFFICE LIGHT, NEXT LEVEL



As experts and the world market leader in mobile office lighting, we offer you YARA, the most intelligent and individual generation of luminaires ever seen. In a design as minimalist as it is distinctive, practical and flexible in use, with concentrated and ingenious German lighting technology, smart light management options, and endless configurations YARA sets new benchmarks in virtually every discipline. With surprisingly short delivery times. This really is office lighting, next level.





DESIGN, NEXT LEVEL

If we want to focus on our work, we mustn't be distracted by our surroundings. That includes the ambience as well as our colleagues. So design should be conspicuous, above all for its restraint as well as its reliable functionality.

YARA MAKES THE OFFICE MORE ATTRACTIVE

Minimalism means dispensing with anything superfluous. In that case, YARA is the perfect example of minimalist design language. All the technology is integrated discreetly into the head and column of the luminaire, while the clear, reduced design is so understated that it almost seems transparent. And what could be more attractive and inspiring than a workplace with no visual distractions? Practical minimalism; thanks to the understated style and muted colours YARA looks good in any ambience, from a small to an open-plan office.

There is nothing to disturb the simple, minimalist design. The elegant angle of the head creates a visual trick, making the luminaire seem even more slender.

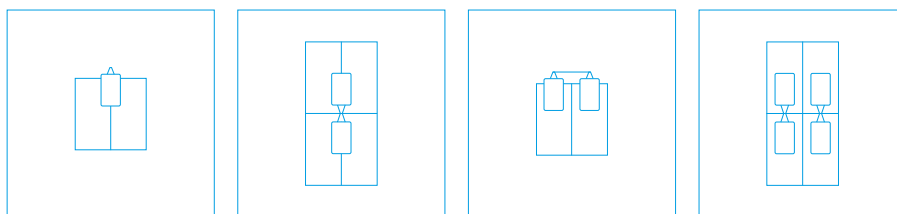






YARA MAKES THE OFFICE MORE FLEXIBLE

The best design is one that adjusts to its surroundings and its users, which is why we developed YARA as a modular system from components – luminaire head, column and base – that can be varied and combined in many different ways. Thus YARA offers the right lighting solution for all kinds of desk situations – with single or multi-head luminaires. YARA remains flexible so you can too. The innovative magnetic control unit can be positioned anywhere – on a desk, for example, or on the wall. We can also supply more than one control unit if required.





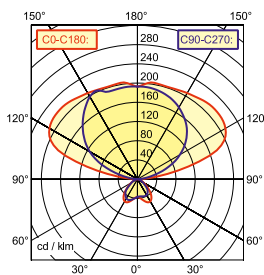
LIGHTING QUALITY, NEXT LEVEL


State-of-the-art technology and top quality are not only due to our German ambition. If our light allows you to work better, the result will be better products and solutions that benefit us all in the end.



YARA MAKES OFFICE LIGHTING BETTER

Because many offices are still poorly lit to this day, it's impossible to fully utilise the potential of the people who work in them, but it doesn't have to be like that! We have fitted YARA with highly efficient LEDs to produce a mix of direct and indirect light. The slightly asymmetrical, wide-beam light emission provides the optimum light, and in no fewer than 10 different levels of luminous flux. This should ensure that something special is created at every desk.



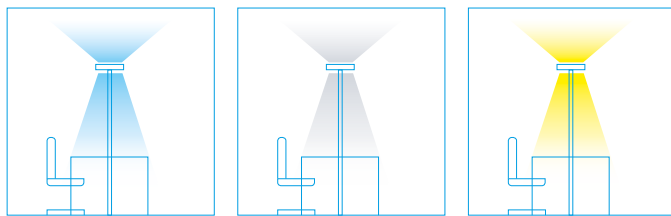


With its slightly asymmetrical wide-beam light distribution, YARA creates the optimum lighting conditions at the workplace.



YARA MAKES OFFICE LIGHT MORE PLEASANT

Cool or warm light? YARA has both, and in many colour gradations from 2,700 to 6,500 K. The VTL option gives you all in one place, so that YARA provides the workplace with biodynamic light, reflecting the progression of natural daylight. The luminaire varies the colour and quantity of the light without being connected to the building management system. A clever and forward-looking decision that increases staff wellbeing, concentration and performance.



VTL: light that follows the progression of natural daylight, from cold and invigorating in the morning to warm and soothing in the evening.



Fill up with inspiration and recharge with brilliant ideas! Our EMIL 28 showroom radiates the spirit of company founder Emil Waldmann. **#blackforestlight**

SHINE A

Waldmann W

Shine the light of precision
so people can build better things.

Shine the light of reason
so people can see more clearly.

Shine the light of creation
so people have brighter ideas.

Shine the light of knowledge
so science reveals more.

Shine the light of day so your
people stay healthy at work.

Shine the light of sustainability
so nothing is wasted.

Shine the light of connectivity
so your building works as one.

Shine the light of experience so
your projects evade costly errors.

Shine the light of success so your
organisation can grow and prosper.

Shine the #blackforestlight
and conquer darkness, forever.

ALIGHT





SMART LIGHTING, NEXT LEVEL

A smart office is only ever as smart as the equipment in it. Light management systems from Waldmann make a valuable contribution here, from daylight and presence sensors to data preparation for the optimum floorspace management. Now if that's not smart...!



Ready for greater efficiency: every YARA lamp has all the hardware required for various light management options. You decide which functions you need.

Sensor

YARA MAKES THE OFFICE MORE EFFICIENT

How much more efficient do you want your office to be? YARA offers light management solutions that cut energy costs and increase working comfort. The PIR daylight and presence sensor integrated in the luminaire can be configured with Bluetooth or Enocean wireless technology. YARA is also optionally available with VTL for biodynamic light, or with TALK for intelligent communication between lamps for swarm control, or even with a building management system to Cloud connection (LTX). Using the LIGHT ADMIN app, the luminaires can quickly and easily be parameterized and integrated into the structure of the individual building.



Nothing escapes YARA with LTX: thanks to the precise presence detection (display for each desk), sensitive noise detection, precise air quality measurement and objective temperature reading (display in each luminaire).



Desk on right

Generic display

Noise level

Sensor

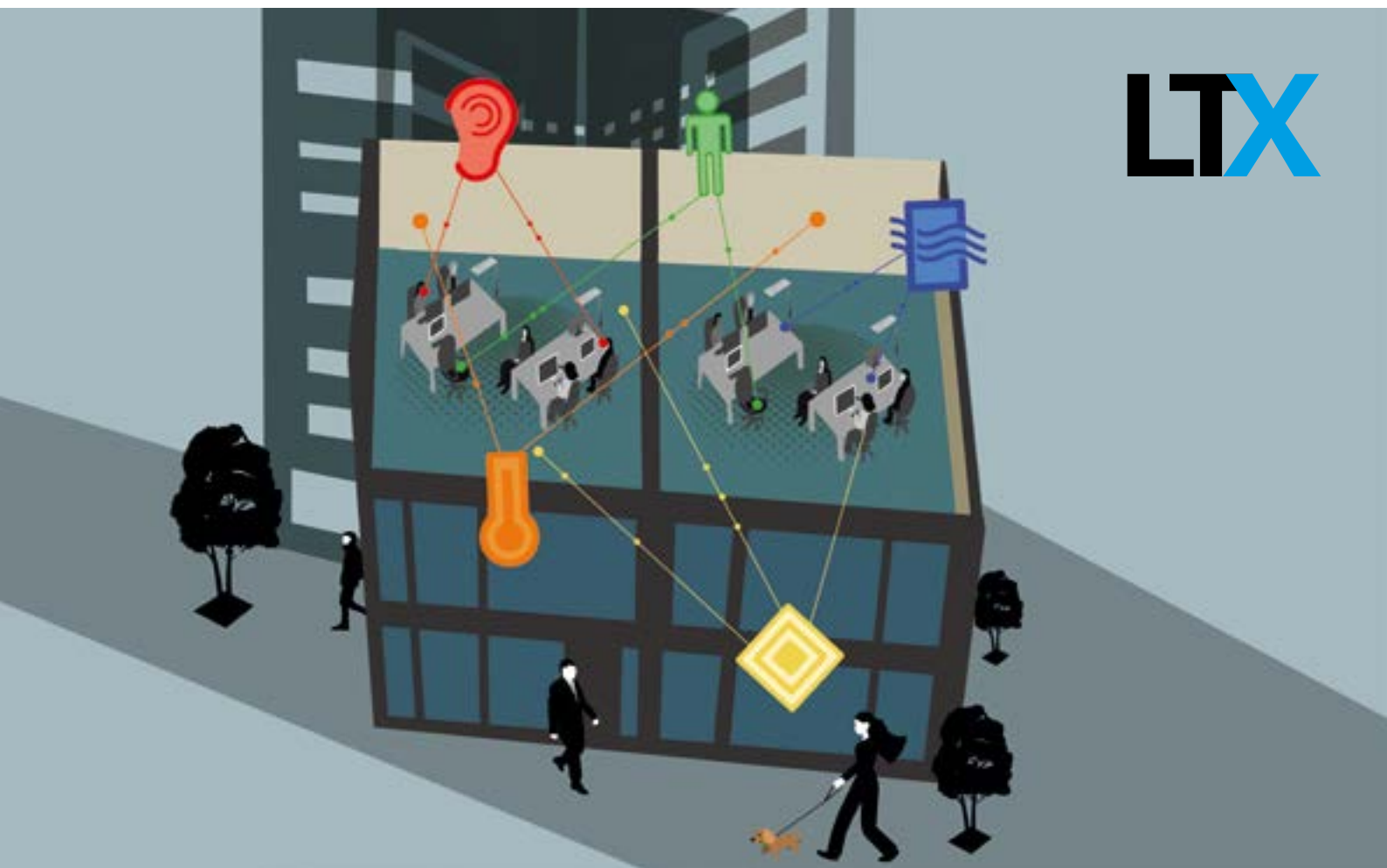
Air quality

Temperature

Desk on left

YARA MAKES THE OFFICE MORE INTELLIGENT

The most intelligent version of YARA contains LTX, our groundbreaking sensor-based technology. The luminaire uses LTX to establish the temperature, noise level and air quality – important indicators of staff wellbeing and efficiency – in real-time, and processes this information for the optimum floorspace management. With the minimum effort, LTX helps get the best out of the office and improves staff wellbeing, creating the best possible working environment at the same time. Want to know more? Send for the LTX brochure right now!



YARA MAKES EVERYTHING EASY AND FASTER

Our aim was to provide everyone with their own YARA, tailored to their individual needs, and we've done it! YARA is available in countless different versions. Just use the online configurator and put together the design you want. And thanks to our clever production processes, you can welcome your YARA to the office as your new, efficient and intelligent member of staff in just two weeks. To see all the luminaire combinations currently available, visit www.waldmann.com/yara/configurator



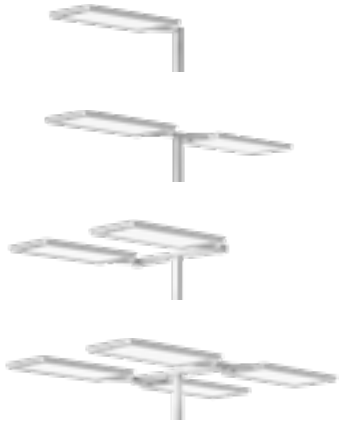
YARA is certified Cradle-to-Cradle®, which means that the components are optimised during the design and manufacturing processes for the next utilisation phase, so that they can be put back into circulation after use.



*The 14-day delivery deadline is a non-binding standard deadline that can be exceeded due to production requirements or spikes of demand on a case-by-case basis. Please kindly ask our sales department for the exact delivery date of your YARA order.

4 luminaire geometries

Sophisticated adaptation system for a choice of single or multi-head luminaires.



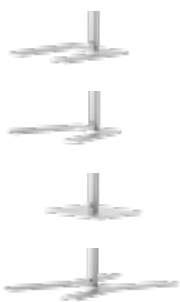
1 column

Column with integrated technology, CEE connection (safety plug) or type 12 (CH) plug.



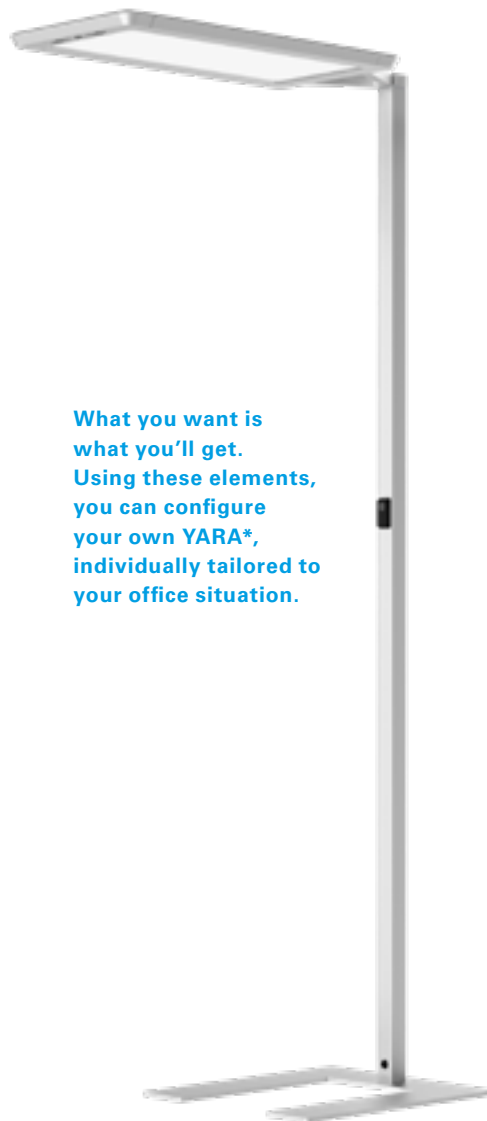
4 types of base

Available with a choice of standard or design base, suitable for single or multi-head luminaires.



3 colours

Available in a choice of three muted colours: white, silver and black.



What you want is what you'll get. Using these elements, you can configure your own YARA*, individually tailored to your office situation.

2 sensor types

With standard PIR presence and daylight sensors or optional sensor-controlled LTX technology.



10 luminous flux levels

Choice of 10 different power classes for the optimum light at every desk.

- 6000 lm
- 7000 lm
- 8000 lm
- 9000 lm
- 10000 lm
- 11000 lm
- 12000 lm
- 13000 lm
- 14000 lm
- 15000 lm

6 colour temperatures or VTL

6 colour gradations from cool to warm, or with the VTL option for biodynamic light.

- 2700 K
- 3000 K
- 3500 K
- 4000 K
- 5000 K
- 6500 K
- VTL



2 communication systems

Optional: TALK for intelligent communication between luminaires for swarm control and the building management system or cloud connection (LTX).

- TALK Bluetooth
- TALK EnOcean



*Subject to technical modifications and errors.
The available combinations are based on the technology currently available.



OFFICE LIGHT, NEXT LEVEL. YARA

- Minimalist but distinctive design
- Maximum individuality in use
- High light quality
- Innovative light management solutions
- Easy product configuration
- Prompt availability

THE LIGHT OF BUSINESS

For more than 90 years, we've been building some of the best lighting systems in the world here in Villingen-Schwenningen. But for us, light is not an end in itself. Our light is there to serve. To work. To create. To extend horizons. To wake people up. To regulate sleep hormones. The top quality and optimal user-friendliness ensure that people can do what they want to, and thanks to the latest German technology, to do things as well as they can be done. We shine the best possible light in the offices and industrial buildings of many leading architects, with innovative solutions marked by easy-to-understand installation and application, and by timeless modern design, and by typical Swabian value for money. Yara is made by a world market leader with a workforce of a thousand and branches in 10 countries. Family-run, as Hidden Champions should be.

(1 of 1000)

At this point, we want to shine a light on the Waldmann staff who do everything they can to create the best possible lighting solutions. Thanks, Christoph!

A portrait of a man with a beard and mustache, looking slightly upwards and to the right. He is wearing a dark shirt. The background is a light, neutral color.

ENGINEERS OF LIGHT: CHRISTOPH